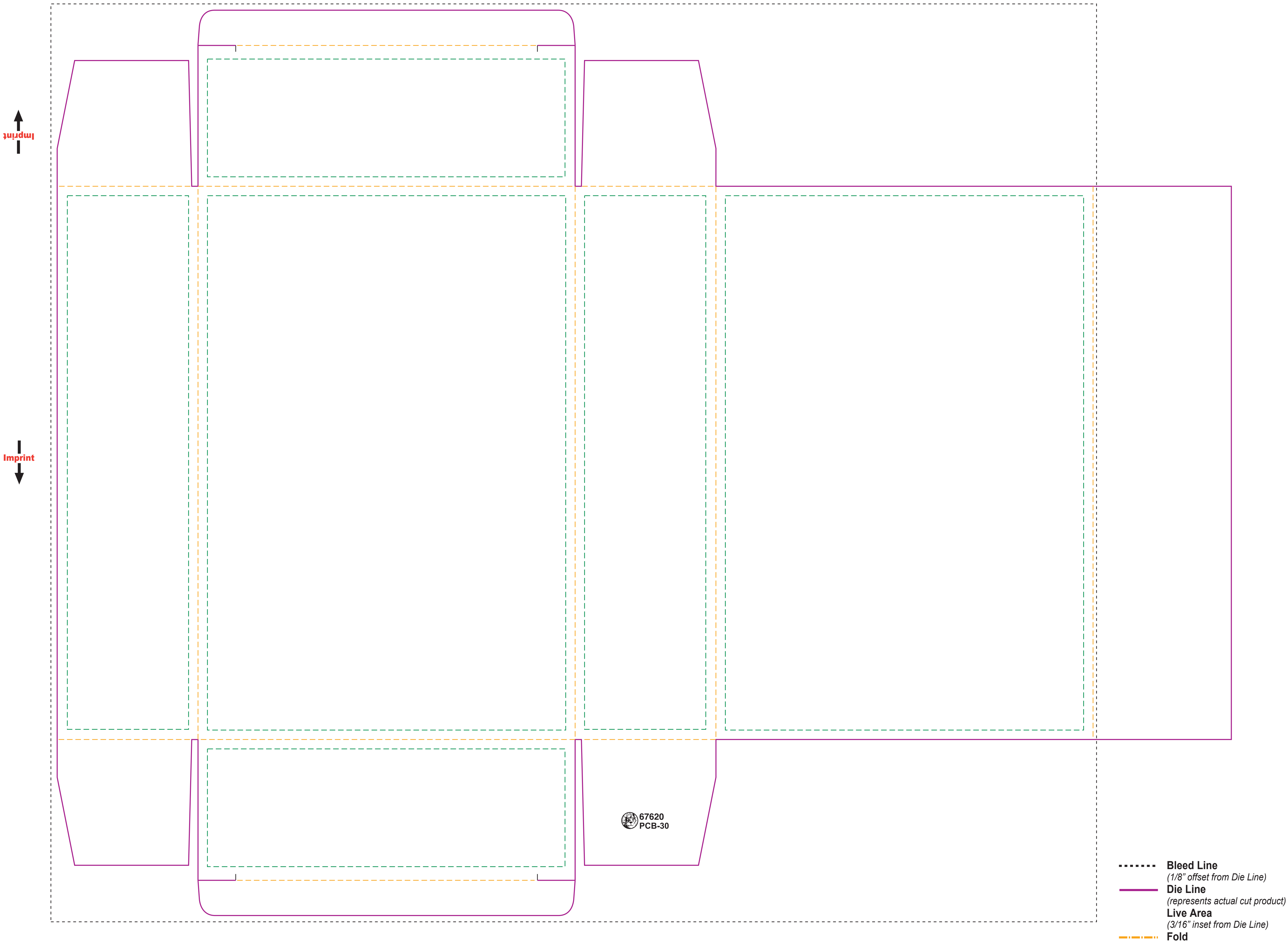


**Front**

**Back**



- ..... **Bleed Line**  
*(1/8" offset from Die Line)*
- **Die Line**  
*(represents actual cut product)*
- **Live Area**  
*(3/16" inset from Die Line)*
- - - - **Fold**

*Actual size*  
**Width: 23.35 in.**  
**Height: 18 in.**

*Assembled size*  
**Width: 7.5 in.**  
**Height: 11 in.**  
**Depth: 2.8 in.**